

Micro-Mark®

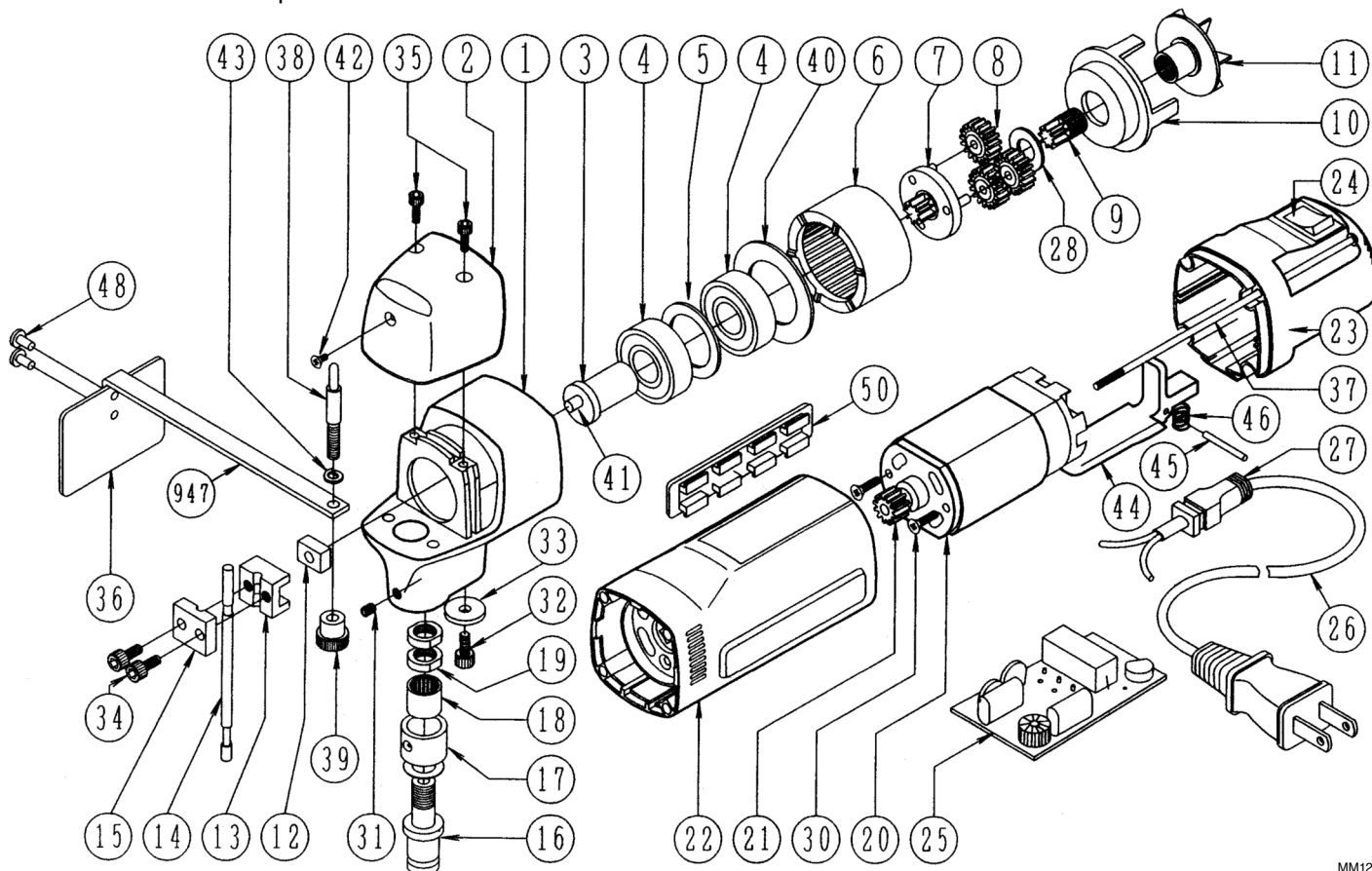
340 Snyder Avenue, Berkeley Heights, NJ 07922 • Tech Support: 908-464-1094
www.micromark.com MMTechService@micromark.com

INSTALLATION INSTRUCTIONS FOR #81556A REPLACEMENT CUTTER / NOZZLE FOR POWERED NIBBLER

Please read through and understand these instructions before attempting disassembly of your Powered Nibbler.

To replace the cutter/nozzle assembly, complete the following steps:

- A. Disconnect the line cord from the wall socket.
- B. Remove two screws #35 using the large hex key.
- C. Remove set screw #31 using the small hex key.
- D. Remove head cap #2 by pulling straight up.
- E. Remove two screws #34 using the hex key that came with your Powered Nibbler.
- F. Remove retainer #15 from drive assembly.
- G. Remove cutter bar #14 by gently tapping it down and out.
- H. Remove the nozzle assembly #16/17/18/19.
 - I. If replacement parts #13, 15, and 34 are attached to the new cutter bar/nozzle assembly, remove them.
 - J. Replace parts #12 and #13 if necessary. Otherwise, save for future use.
- K. Install new cutter bar #14 and retainer #15. Be careful to make sure that the short groove in #14 properly mates with parts #13 and #15. Secure by reinstalling screws #34.
- L. Install new nozzle assembly. Be sure recess on side of assembly aligns with set screw hole.
- M. Reinstall and tighten set screw #31.
- N. Apply grease to all moving parts. *Shield mechanism to prevent grease from splattering in the next step.*
- O. Plug in tool and run momentarily to be sure everything works as it should. If any binding occurs, determine the cause and re-adjust everything so the tool runs smoothly.
- P. Reattach head cap and secure with two screws #35.





Material feeds into slot in nozzle.

Radius Cutting



Straight Line Cutting



Freehand Cutting