

Micro-Mark®

340 Snyder Avenue, Berkeley Heights, NJ 07922 • Tech Support: 908-464-1094
www.micromark.com MMTechService@micromark.com

OPERATING INSTRUCTIONS FOR POWERED NIBBLER #81556

SAFETY FIRST! WEAR SAFETY GLASSES WHEN USING THIS TOOL.

NOTE: This tool cuts by nibbling away material from the edge of the workpiece; therefore, you must start the cutting action from an edge or from a pre-punched 7/16" hole. Do not attempt to start a cut by placing the cutter tip on the surface of your workpiece, or the tool will simply skip across the surface and not cut anything.

The MicroLux Powered Nibbler will cut through brass, aluminum, soft steel, plastic, and wood sheets up to 1/16" thick. However, the speed at which the tool will cut depends on the hardness and toughness of the material. For example, while the tool will rapidly cut .025" thick half-hard brass, .062" thick brass must first be annealed (softened by heating with a torch to a dull-gray color) in order to cut properly. When cutting metal, it is also important to keep the cutting tip well-lubricated with light oil so that chips won't hang up in the nozzle and cause a jam. Keep the nozzle chip-ejection hole clear.

Do not force the tool; give it sufficient time to nibble its way through the material. When working with thin sheet, apply a slight downward pressure against the sheet to avoid chatter. With a little practice, you'll be able to make fast, smooth cuts along your guide lines. This tool is covered by a manufacturer's defect warranty, but if you try to cut too fast through too tough or too thick a material, you may break the tip off the nozzle and void the warranty.

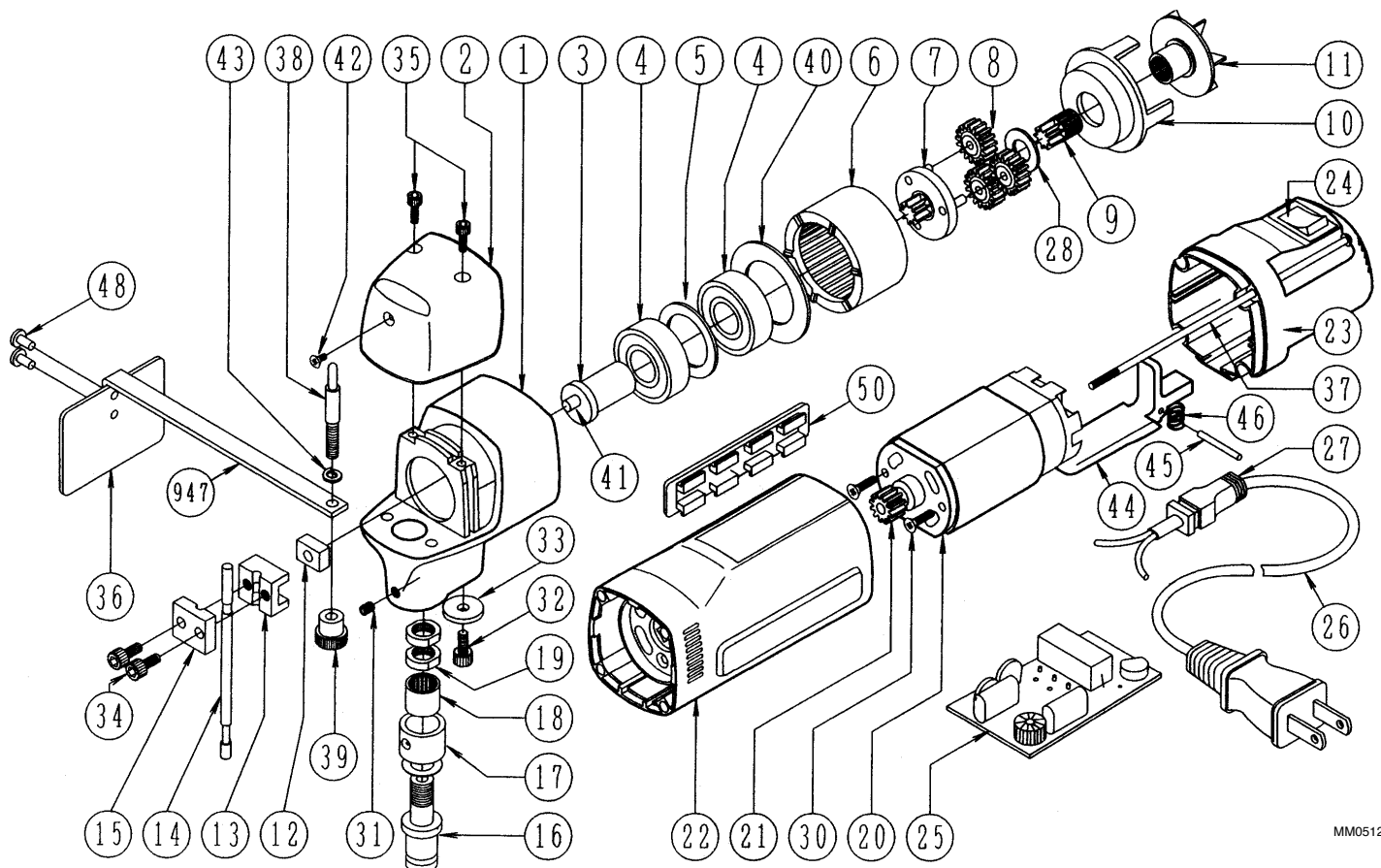
To run the tool, plug the line cord into a 110v AC wall socket, turn the master power switch located on the top-rear of the unit to ON, then grasp the tool firmly and squeeze the trigger located on the bottom of the unit.

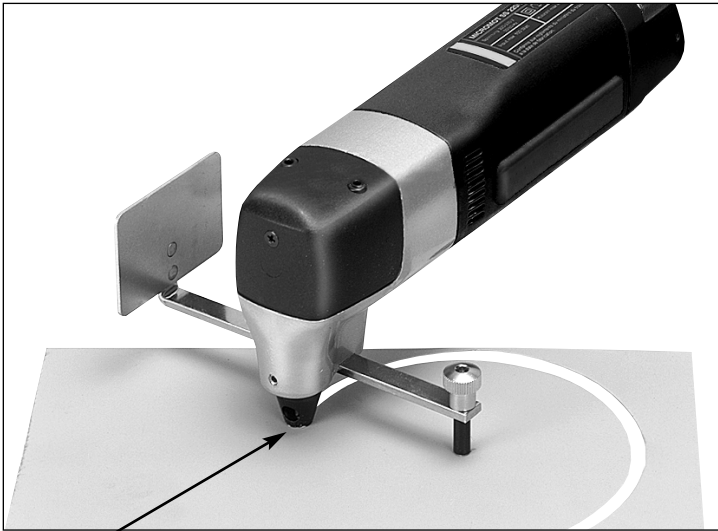
The nozzle rotates so that you may steer the cutting action in any direction. The small connecting bar which holds the nozzle tip around the cutting bar will trail through the slot cut in the material.

Included is a special attachment which guides the nibbler through the workpiece: a straight fence/radius guide. To install the attachment, first remove the cap screw and washer located on the underside of the tool next to the nozzle. Insert the flat bar of the attachment into the slot and reinstall the washer and cap screw. Position the attachment and tighten the cap screw. The pin of the radius guide should point in a direction opposite to that of the fence. To cut straight lines, use the attachment with the fence aimed down. To cut a radius, first drill a 1/8" diameter hole in your workpiece at the center of curvature, then invert the attachment and insert the radius guide pin into the hole in the workpiece to guide the nibbler. For free-hand cutting, remove the attachment. See the illustrations on other side of this sheet.

After extended use in tough materials, the cutter may show signs of wear. A replacement cutter/nozzle set is available from Micro-Mark as part #81556A: includes instructions for installation plus items 12, 13, 14, 15, 16, 17, 18, 19, and 34 shown on the parts drawing below.

As with any electrically powered tool, do not use in a wet environment. Disconnect the power cord before servicing.





Material feeds into slot in nozzle.

Radius Cutting



Straight Line Cutting



Freehand Cutting