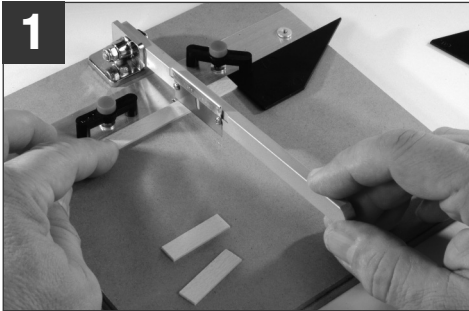


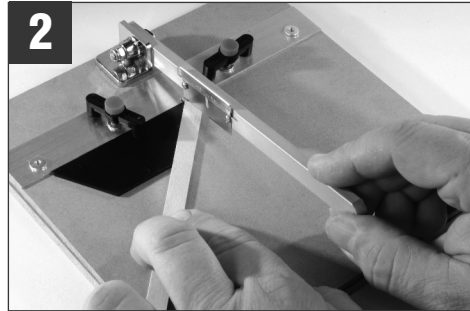
#84046 CHOP IT • TIPS AND TRICKS FOR USE

Chop It is designed to cut thin wood and plastic strip. If the material being chopped is thin (less than 3/32"), then a relatively wide strip (up to 3/8") may be cut. If the material is rather thick (up to 3/16"), then the width should not exceed 3/16". Although Chop It is designed to last for many, many years of hobby use, please use common sense and do not over-tax the tool; otherwise, you may damage it.

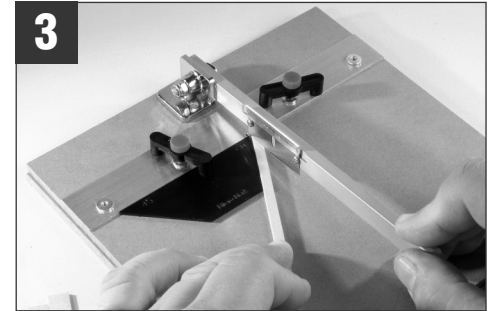
Note: The blade is razor sharp. Keep your fingers and any other parts of your body away from the cutting edge at all times; otherwise, severe injury could result from contact with the cutting edge of the blade.



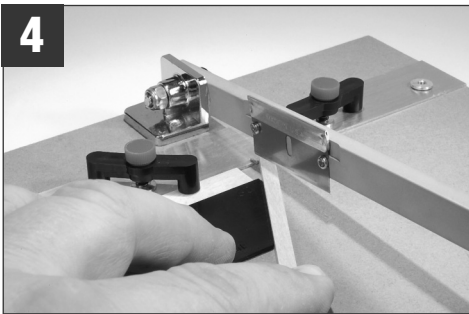
Use Chop It as shown above to cut a set of stripwood pieces to the same length. Use the right-angle gauge as a stop bar.



Use Chop It as shown above to cut stripwood at an angle. Note: Large angles will increase the effective width of cut; avoid overloading the tool by attempting to cut thick pieces at a large angle.



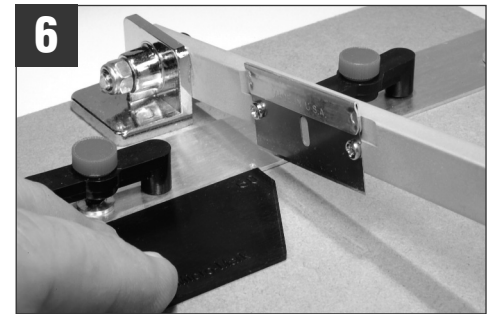
Use the angle gauges for common angles. Position the gauge so it clears the cutting edge of the blade. Use the locking clamps to hold in position.



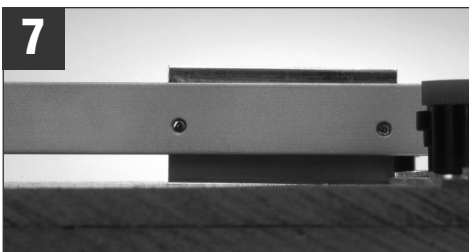
You can use a piece of thin stripwood as a spacer between the fence and the angle gauge to move the strip being cut away from the fence.



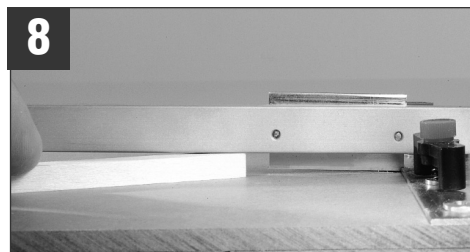
You can relocate the clamps to any convenient location.



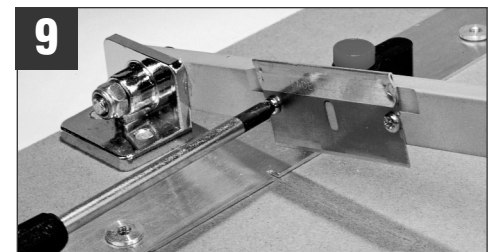
If so desired, use the chopper to cut off a small tip of the angle gauge to allow closer positioning of the gauge to the cut line.



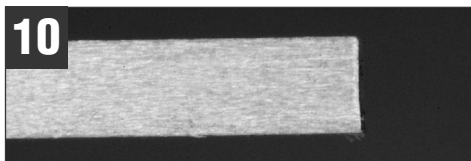
For better cutting action, the blade is deliberately set at a slight angle to the base board to provide a slight slicing action. Be sure to press down far enough to completely cut through the workpiece.



Do not attempt to cut materials thicker than the blade protruding from the bottom of the handle (about 3/16 inch); otherwise the handle will strike the top of the workpiece before the blade has a chance to cut all the way through it.



If the cutting pressure increases, the blade is getting dull and needs immediate replacement. Loosen one blade-retaining screw, then remove the other. Now remove the blade. Be careful...do not cut yourself! Blade installation is the reverse of removal.



The shape of the cutting edge of the blade may leave a slight angle on the bottom edge of thick pieces. Use Micro-Mark's **Sand It** to square up the cut.