

Micro-Mark® Operating Instructions for #87775 MicroLux® Miniature Table Saw



Dear Customer:

Designed specifically for rip-cutting narrow strips from sheet stock and for cross-cutting to close tolerances, the MicroLux® Mini Table Saw will even cut plastic, thin non-ferrous metals and printed circuit board with our optional fine-tooth blades.

State-of-the-Art production and testing procedures ensure the maximum reliability from your power tool.

This manual includes:

- Safety instructions
- Installation and operating instructions
- Spare parts list
- Warranty information

Reading this manual will:

- Help you understand the machine's operation.
- Avoid malfunctions due to improper operation.
- Increase the life of the machine.

Always keep this manual close at hand.

Do not operate the machine unless you are fully familiar with it. Please observe the safety instructions.

Use only original MicroLux spare parts.

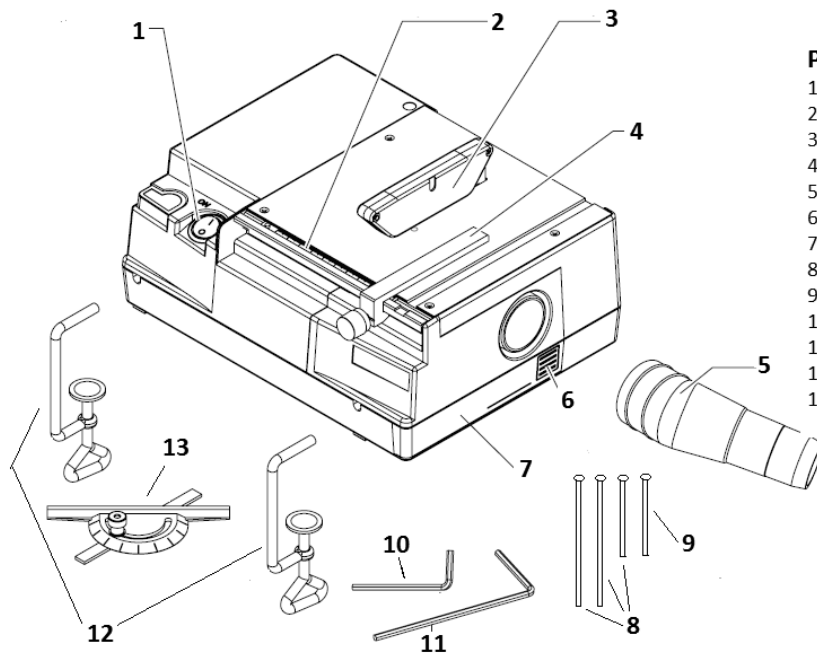
Safety Instructions

Please read the following safety instructions thoroughly and follow them before starting to work with the machine:

- Always wear safety glasses when operating power tools.
- Keep the work area clean and tidy.
- Do not use electric tools in rain, under wet conditions, near flammable liquids or gasses.
- Avoid contact with grounded parts, such as pipes, radiators, cookers or refrigerators.
- Store tools out of the reach of children.
- Do not overload the machine.
- Do not wear loose clothes or jewelry.
- Do not carry the machine by the electric cable.
- Keep the electrical cable away from heat, oil and sharp edges. If necessary have it replaced by a professional.
- Fasten the machine securely to a work table.
- Replace dull saw blades.
- Clean the machine thoroughly after completing your work.
- Pull out the electric plug before maintaining the machine, before changing the saw blade or the toothed belt, or when not using the machine.
- Make sure that the machine is switched off before connecting it to the wall outlet.
- Check the machine for obvious damage before use. Replace defective parts.
- Repairs in the electrical system should be carried out by a specialist.
- Use only accessories and spare parts which are recommended.
- Use a push stick when working near the saw blade.

Parts bags contain the following items:

- 1 Miter Gauge
- 1 Rip Fence
- 3 Wood Screws
- 1 Machine Screw
- 1 Vacuum Adapter
- 2 Hex Key Wrenches
- 2 C-Clamps



- Parts Legend:**
- 1- On / Off Switch.
 - 2- Sliding rule.
 - 3- Blade guard.
 - 4- Rip fence.
 - 5- Vacuum adaptor.
 - 6- Door release push button.
 - 7- Sliding Door.
 - 8- Three wood screws.
 - 9- One machine screw.
 - 10- Small hex key.
 - 11- Large hex key.
 - 12- Two c-clamps.
 - 13- Miter Gauge.

Understanding Your New Saw

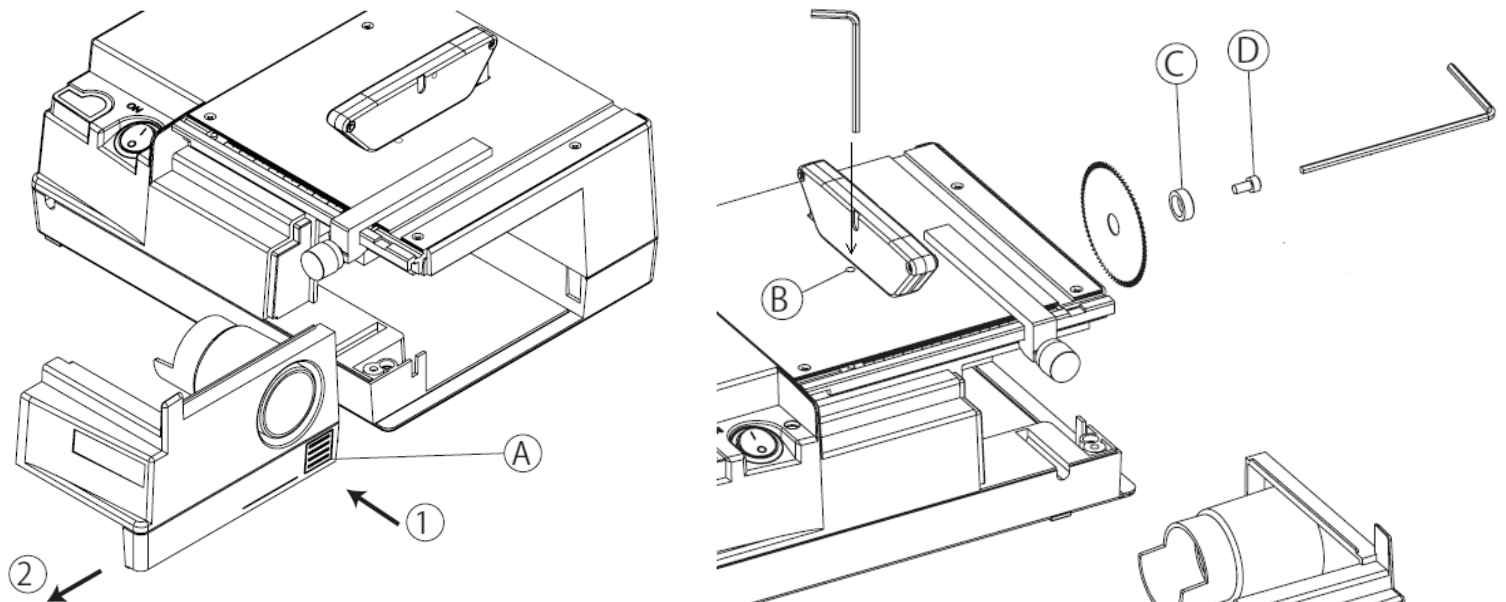
Your saw is designed to run on standard household current (110V 60Hz). This saw will cut softwoods, hardwoods, plywood, plastics and thin non-ferrous metals quickly and cleanly with the appropriate blades installed.

Saw includes a pre-installed, general-use, eighty-tooth saw blade for rip-cutting and cross-cutting wood. Optional blades include our #15220 one hundred-tooth fine saw bade and #86619 twenty-tooth carbide blade (check our website for additional blades as they become available). In addition, your saw includes a rip fence, miter gauge, vacuum adaptor, and a set of accessories that will allow you to mount the saw to a table or to a piece of 3/4" plywood for portability. The improved blade guard, which is also pre-installed on the saw, should never be removed, as it is designed to protect the user during cutting operations.

Turning the saw "On" is done by placing the rocker switch into the "I" position; turn it "Off" by placing the switch in the "O" position. Before plugging the unit into the power supply, always ensure that the switch is set to Off. **Be sure the blade and table surface are clear of obstructions, tools, fingers, etc. before starting the saw.**

Installing and Removing Blades

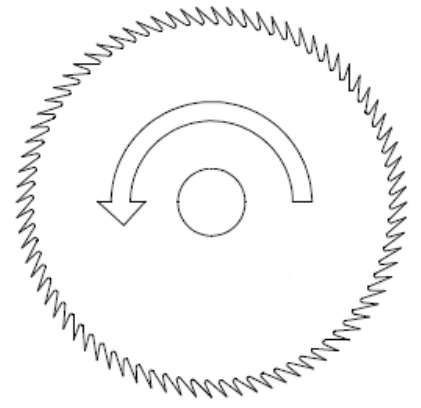
Switch the saw to the Off position and unplug the power cable from the wall. Push in the door release button "A" to unlatch the door, then slide it forward from its slot. Insert the long end of the smaller hex wrench into hole "B". Lift the blade guard and cover the blade with a rag or wear a heavy glove and rotate the blade by hand until the hex key drops into the hole in the arbor shaft; this will hold the shaft in place while you remove the set screw "D" with the larger hex wrench. Once the set screw is removed, pull outer washer "C" off of the arbor shaft. Pull the blade out from the bottom, tilting it until the blade slips off the arbor shaft and then slides down and out. Install a new blade by following these steps in reverse order. Always make sure the blade is positioned correctly on the arbor shaft and that arbor set screw "D" is tight. Remove the hex wrench from hole "B" and rotate the blade by hand to ensure it rotates without wobble and is seated correctly. Reinstall the side door by sliding it back into position until it locks.



A Note about Saw Blades

When installing a new saw blade, it is crucial to identify the proper orientation of the blade. While some blades are marked with a directional arrow, others are not. To avoid any confusion, the best way to identify the proper direction of blade rotation is to look at the blade's teeth. They should always point towards the front of the saw (from the 12:00 to 9:00 position) as shown.

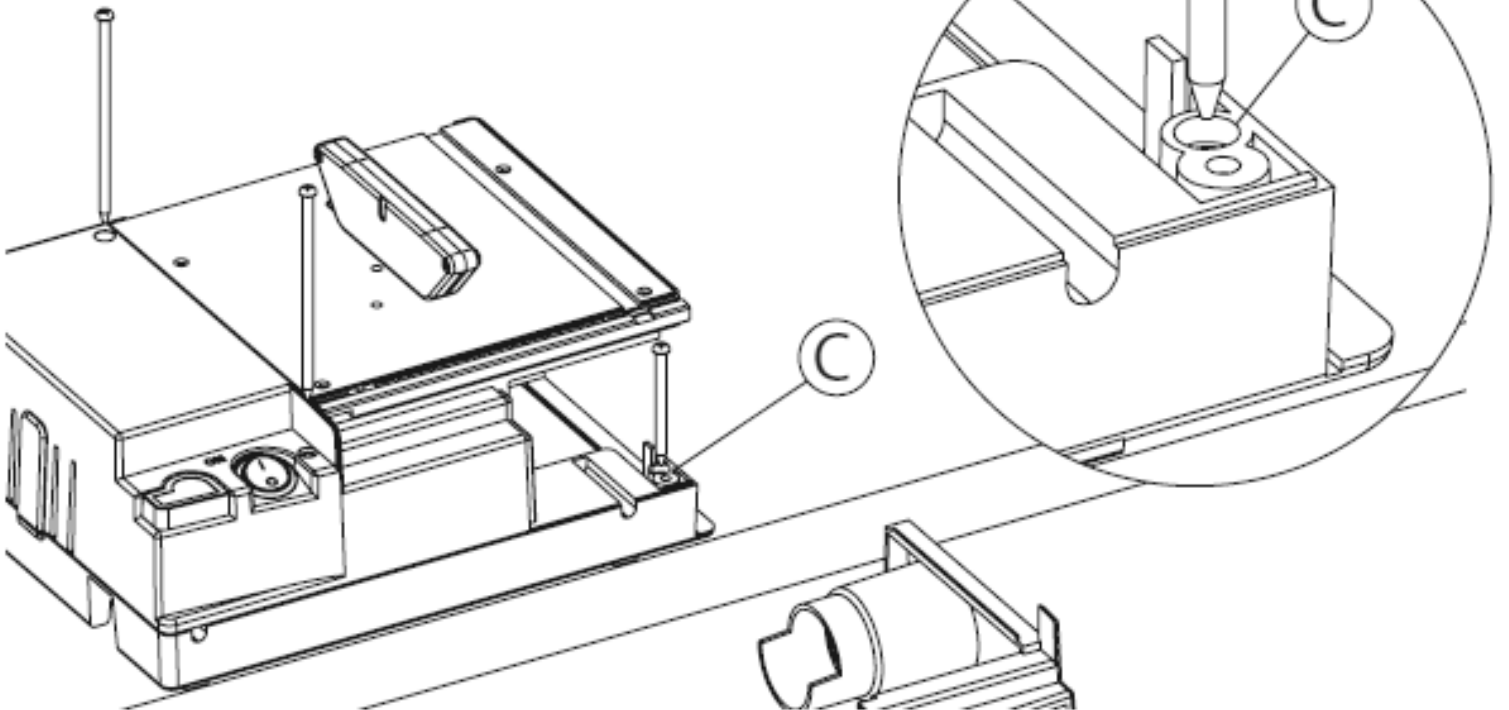
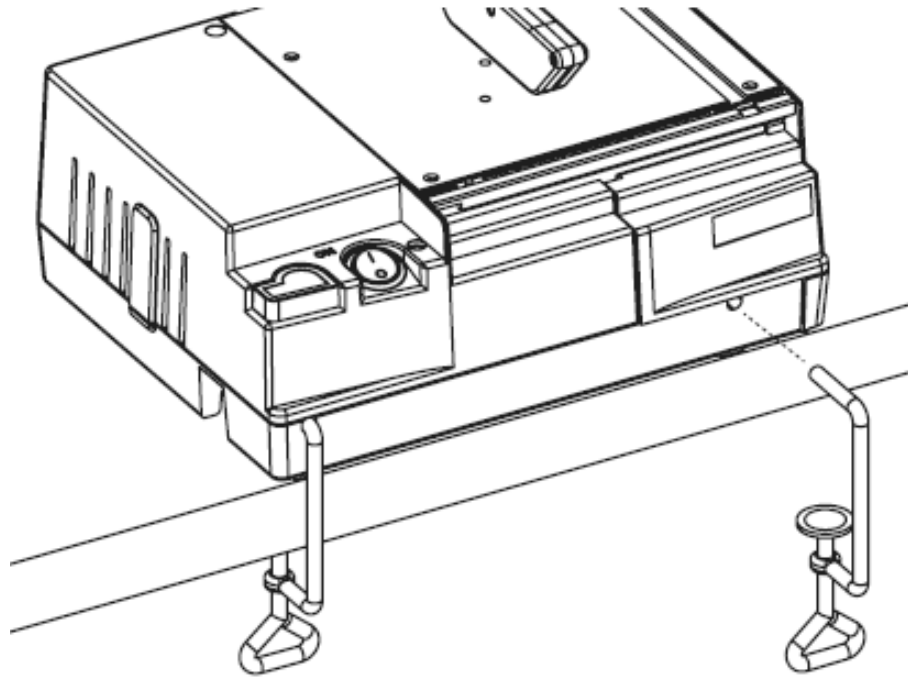
Front
of saw



Mounting the Saw

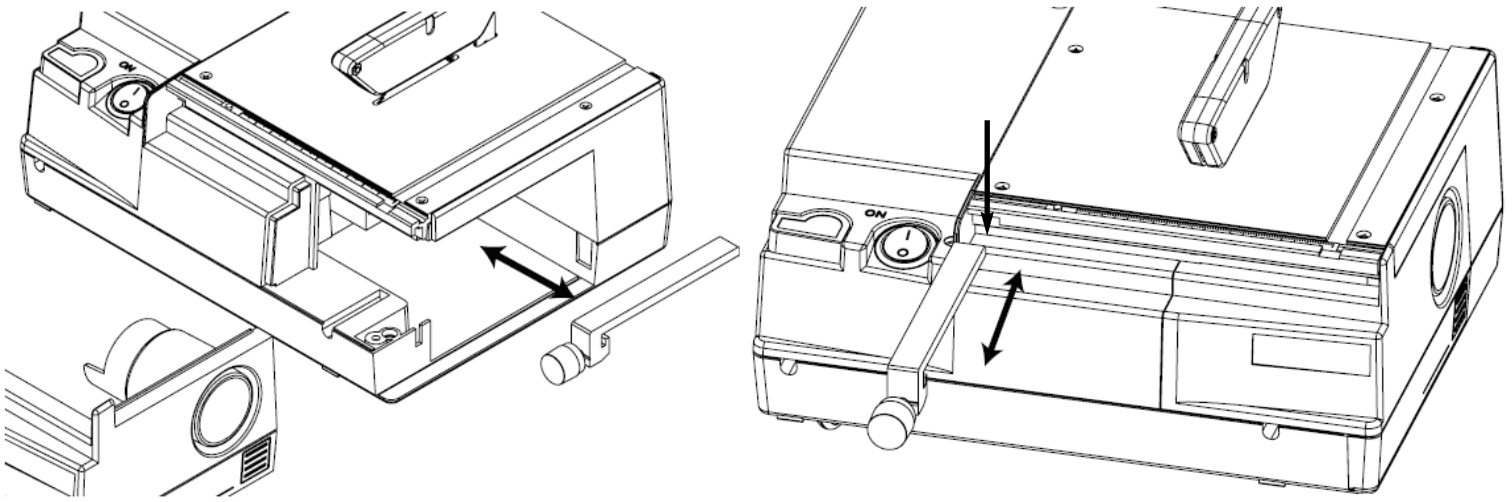
To use the saw safely, accurately and successfully, and to avoid vibration, it must be secured to your work surface. Securing the saw is straight-forward and relatively easy using one of the methods below:

- Use the specially designed C-clamps provided with the saw to quickly and easily secure it to work surfaces up to 1-7/8" thick. Add a wood spacer block if your work surface is too thin for the clamps to be tightened securely.
- 3 wood screws (2 long and one short) are provided to permanently mount the saw to your work surface. Insert the 2 long screws through the holes indicated in the top of the saw on the left side of the housing and the remaining small wood screw in hole "C." Drive the screws into the work surface until tight (be careful not to over-tighten). You may also consider using these screws to mount the saw onto a piece of 3/4" plywood and then clamp the entire assembly to your work surface for a less-permanent option.
- Our optional #81387 Easy-Mount Bench Bracket attaches to the saw and provides a quick and easy way to mount the saw to work surfaces up to 2" thick. Foam pads protect the surface from damage.



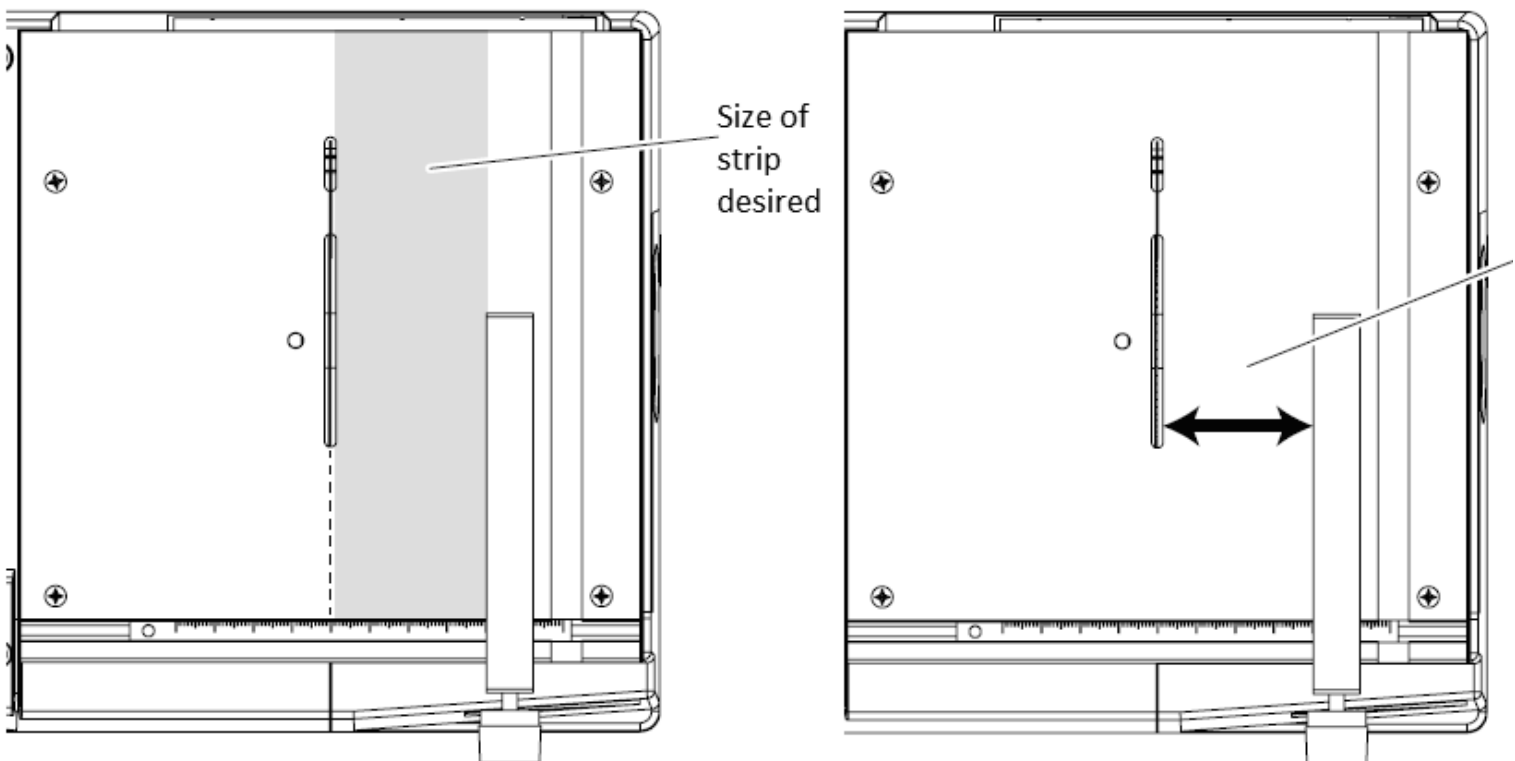
Rip Fence

The rip fence may be mounted from the right or left side of the table. To mount the fence from the right side, slide the right side door out a bit to access the slot on the underside of table; this slot accommodates the corresponding hook-shaped tab on the fence. Engage the tab in the slot, then close the door; move fence to desired location and lock in place with thumbscrew. To mount the fence from the left side, engage the tab into the notch at the far left side of the fence guide and move the fence to the desired position; lock in place with thumbscrew.



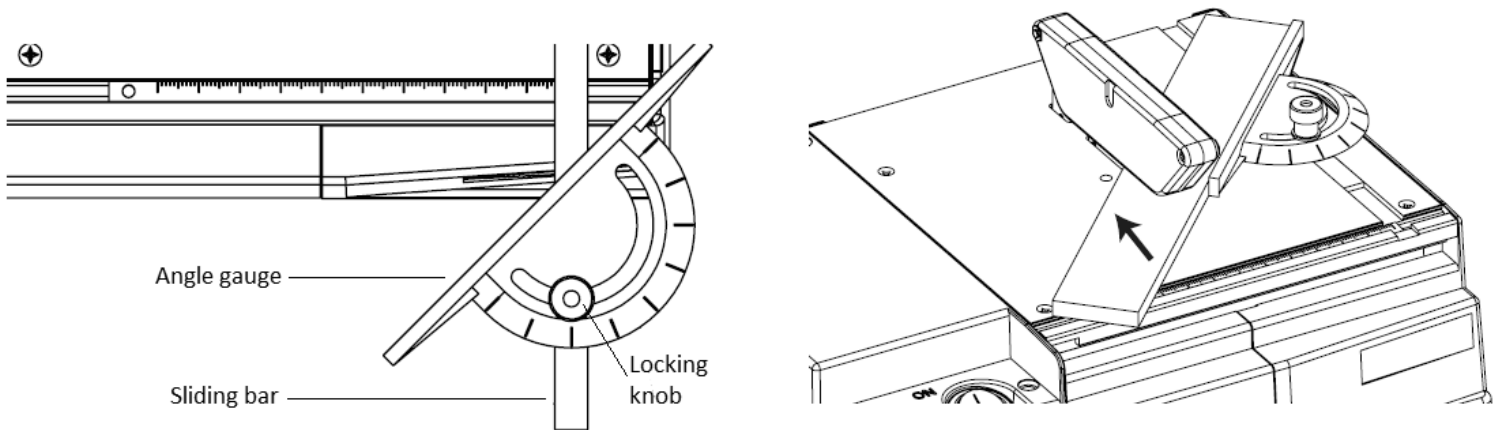
Making Rip Cuts

Rip cutting is making cuts in the direction of the grain in the wood; cross cutting is making cuts across the grain. When setting up the fence to make longitudinal rip cuts, it is important to measure the distance from the fence to the teeth of the blade, not the flat side. Here's why: Some blades, such as the 80 tooth blade included with this saw, feature "set." Set is the alternating pattern of the teeth left and right of the blade's centerline. It improves the cutting action of the blade, and reduces binding and burning when cutting. It needs to be taken into consideration to get accurate cuts. A sliding gauge inch ruler segmented into 20 sections is located in the horizontal slot of the table. Each of the lines represents .050". You can set up the zero or any other mark of this ruler to be in line with the tooth using another square or ruler. Then align your fence according to the distance desired to be ripped. Use of a push stick while ripping is recommended.



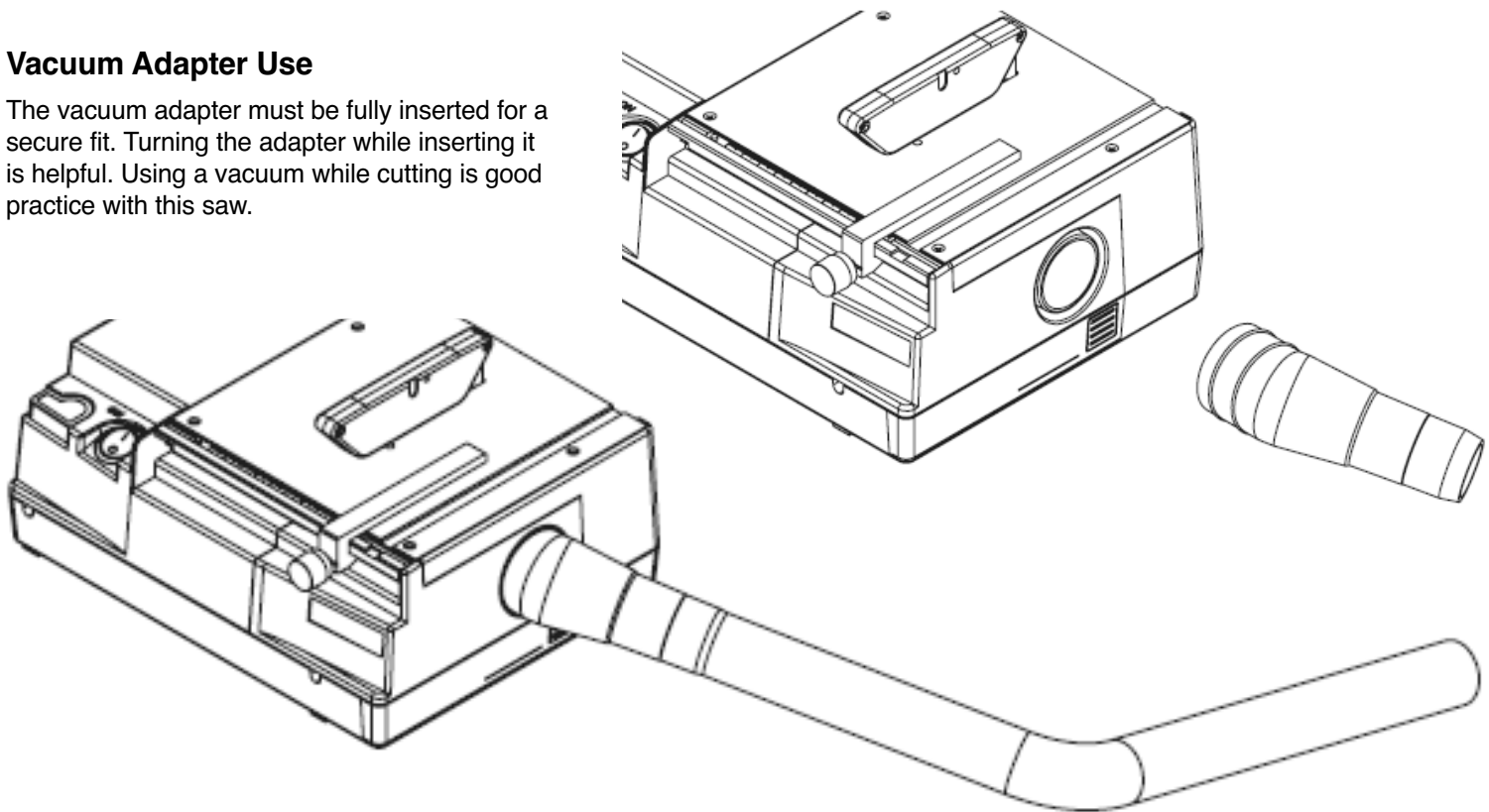
Miter Gauge

The included miter gauge is not only useful for making 90° cross cuts and angled cuts, you may also use it as a push stick / sliding fence. Always set the miter gauge to the desired angle and firmly lock it into position prior to powering up the saw. Once the angle is set, place stock to be cut on the saw table and hold it firmly against the miter gauge. Before powering up the saw, test the sliding action of the path you will take. Then back away and turn the saw on, letting the blade come up to full speed. Hold stock firmly against the miter fence and pass the piece slowly and steadily through the running blade. After the cut is complete, turn the saw off.



Vacuum Adapter Use

The vacuum adapter must be fully inserted for a secure fit. Turning the adapter while inserting it is helpful. Using a vacuum while cutting is good practice with this saw.



Maintenance Information

Only use blades which are in good condition!

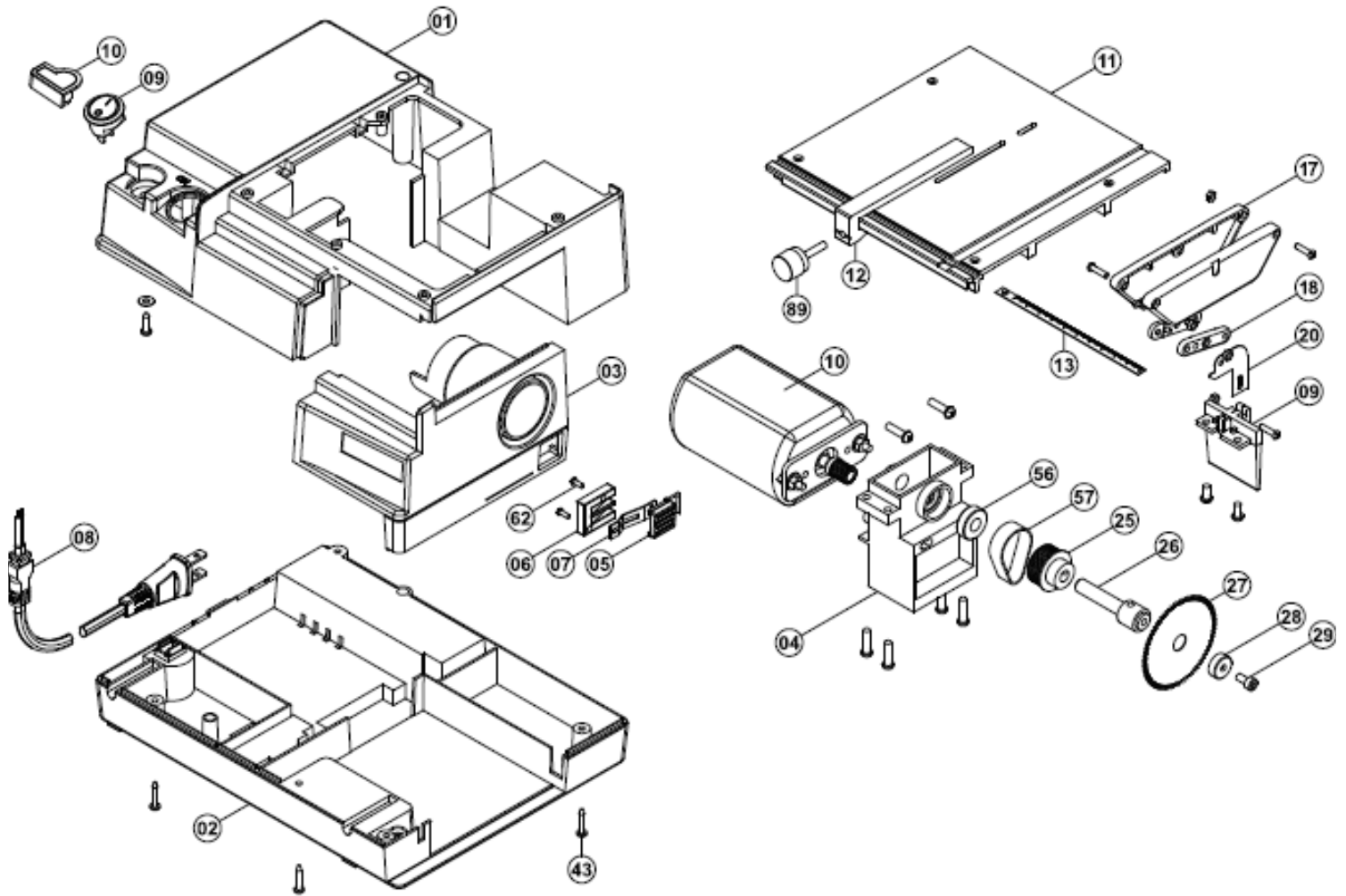
Replace blades when wear is apparent.

Always remove the plug from the wall outlet before maintaining or cleaning the machine.

No lubrication is required.

Do not leave the machine running while unattended.

Duty Cycle (Running Time) is 50/50. Meaning, use for up to 30 minutes and let cool for 30 minutes. If the machine ever gets too hot from running excessively, components could be damaged and cause the warranty to be voided. Please see the warranty information at the end of this manual.



For replacement parts, contact our Technical Service Department at tech@micromark.com and refer to the numbers in the diagram above.

LIMITED WARRANTY

Micro-Mark guarantees this product to be free of manufacturing defects for a period of 90 days from date of shipment, regardless of the amount of time the product has been used and/or stored. The product, or parts thereof, will be repaired or replaced (at our option) and shipped back to you free of charge if the following conditions have been met:

- the product is shipped back to us within the warranty period,
- incoming transportation charges have been pre-paid,
- proof of purchase has been provided, and
- our Service Department determines that the problem was caused by a defect in material and/or workmanship.

Please return to **Micro-Mark Product Service Department** at the address below with a note explaining the problem.

For products returned after the warranty period, our regular repair charges shall apply. Please include your telephone number so we may advise you of the repair estimate. Any product returned to the purchaser without repair work being performed shall be shipped C.O.D. for the return transportation charges.

This warranty does not cover damages resulting from improper assembly, adjustment or maintenance, accident, alterations, normal wear, abuse or misuse, and does not apply where products are used commercially. The warranty shall also not apply when the product has been used for purposes beyond those for which it was designed or unreasonable for its size.

Micro-Mark makes no other warranty of any kind whatever, expressed or implied, and all implied warranties of merchantability and fitness for a particular purpose which exceed the above mentioned obligation are hereby disclaimed by Micro-Mark and excluded from this warranty.

This warranty gives you specific legal rights and you may also have other rights which vary from state to state. The obligation of the warrantor is solely to repair or replace the products. The warrantor is not liable for any incidental or consequential damages due to such defect. Some states do not allow the exclusion or limitations of incidental or consequential damages, so the above limitations or exclusion may not apply to you.

Contact our
Product Service Department
 at tech@micromark.com

Micro-Mark Product Service Department
 340 Snyder Avenue
 Berkeley Heights, NJ 07922